

A low-angle, upward-looking photograph of several modern skyscrapers with glass facades, reaching towards a clear blue sky. The perspective creates a sense of height and architectural grandeur. Red geometric shapes are overlaid on the corners of the image.

Shanghai Nautilus International Logistics Co.,Ltd






Cover major ports in China

Nautilus has its core market in Hong Kong, China, with professional operational partner. Globally we have a diligently selected partner network that offers customers professional global solutions.

 Headquarter - Shanghai

 Partner

- Ningbo
- Nanjing
- Shenzhen
- Xiamen
- Guangzhou
- Wuhan
- Beijing
- Qingdao
- Dalian
- Chengdu



SHANGHAI / NINGBO / NANJING / SHENZHEN / XIAMEN / GUANGZHOU / WUHAN / BEIJING / QINGDAO / DALIAN / CHENGDU



Company Profile



Shanghai based International Freight Forwarding and Logistics Group



Incorporated in 1999, combining Asian and European Management Experience



AVIC,NVOCC and CNAS



Complete China coverage with own fully licensed and representative partner.



License and functions



NVOCC

- Approved by Ministry of Communications of China.
- Be able to issue international maritime transportation bill of lading
- Be able to sign the carrier service contract
- Be able to price ocean freight with customers



CNAS



- To be responsible for the accreditation of certification bodies, laboratories and inspection agencies.
- The furniture is marked with CNAS, indicating that the company or brand has been recognized by the state, and the product quality is more assured.





Primary Contact



Tyrone

General
Manager

Tel : +86 (0)21-63095008
Fax: +86(0)21-63095017/18
Mobile: 18116148269
E-mail: tyrone@nautilus-logistic.com



Cloudy

Operational
Manager

Tel : +86 (0)21-63095008
Fax: +86(0)21-63095017/18
Mobile: 13701693232
E-mail: cloudy@nautilus-logistic.com



Tiffany

Oversea
Manager

Tel : +86 (0)21-63095008
Fax: +86(0)21-63095017/18
Mobile: 13818537044
E-mail: icd@nautilus-logistic.com



Air freight solution



AIRFLEX:

- Reliable and tailored product handling
- Our tailored AIRFLEX service provides back-to-back or direct service for all possible commodities and dimensions carried by passenger or freight airlines.
- This service suits a variety of needs, including extra-urgent, dangerous goods (DG), temperature control, valuable (VAL)...etc.

AIRFAST:

- For time-sensitive shipping
- Our AIRFAST service is a perfect solution for goods that are time-sensitive or highly urgent.
- With pre-defined transit time of between 1-3 days, your shipment will travel in the first available capacity, preferably on scheduled passenger services.
- We offer back-to-back or consolidated service, and we'll be happy to recommend the right carrier and routing to meet your specific requirements.



AIRSAVE:

The most cost-effective solution

- If your main priority is cost, our AIRSAVE service is a great economy solution. This service uses global preferred partners and our own carrier and routing options for branch-to-branch shipping of your general cargo.
- AIRSAVE has a maximum transit time of 4-7 days, transparent all-in rates that can include surcharges, and is perfect solution for shipment consolidation.



Ocean Freight Solutions



Sea Freight

- Major Trade Lanes : Europe, USA, Latin America, Intra Asia and Oceania
- Covering most key carrier partners
- Allocation contracts are globally, regionally and locally negotiated with each carrier alliance

FCL Service

- Flexible carrier selecting & door-to-door network capabilities
- Competitive pricing & capacity through our core carrier program
- Online booking, time and price quotations
- Flexible pricing models



LCL Service

- Direct or maximum one-stop-routing
- Sailing schedule covering + 12,000 port pairs
- Integrated gateway concept
- Buyers Consolidation Program
- Space protection on each sailing





Introduction of Nautilus

Company Name:

- Shanghai Nautilus International Logistics Co., Ltd. (SNIL)
- Capital: RMB 650,0000(100%)

History:

- It was founded in 1999, we start focus on the global biggest emerging markets-China and comprehensive logistics service between the major developed countries.
- In just 15 years, our company had become the leading logistics experts in freight industry.
- After the baptism of the 2009 financial crisis, with the joint efforts of all staff, our company overcome various difficulties.
- The company not only maintain the stable development of business, but also prompt into a new stage.





HQ Office





Transportation Service

- ◆ Warehouse management
- ◆ International air/ ocean forwarding
- ◆ Railway service / routings
- ◆ Liquid Tank transport
- ◆ River transportation
- ◆ ISO TANK oil tank container transport
- ◆ Bulk shipping / Ro-Ro
- ◆ Large equipment transport
- ◆ Freezer transport
- ◆ Dangerous cargo



Warehouse & Yard view



Services

- ✓ Inventory management
- ✓ Value added services, e.g. Pick & Pack, scanning, kitting...
- ✓ Import DC / Export DC / Regional DC
- ✓ Local Distribution
- ✓ Carton level control : carton size, labels, markings
- ✓ Piece level control : quantity, hand tags, care labels
- ✓ Bar code labeling / Buyer's consolidation

Yard Facilities

- ✓ 270,000 sqm. total space,
- ✓ Facilities include - 13 fork-lift-trucks, 4 forklifts, 22 trucks
- ✓ Ensure 24-hour X 7day X 365 days around service
- ✓ Storage, distribution, modification, repair, cleaning

Customers

- ✓ Textile (Flat Pack and Ganger on Hangers)
- ✓ High-Tech
- ✓ Retail (Cosmetics, Food...etc.)





Cooperate Core Airlines



ANL



Cooperate Core Carriers





Rail service



Rail Coverage

- China to Europe
- Europe to China
- China to CIS
- China to Mongolia

Industries

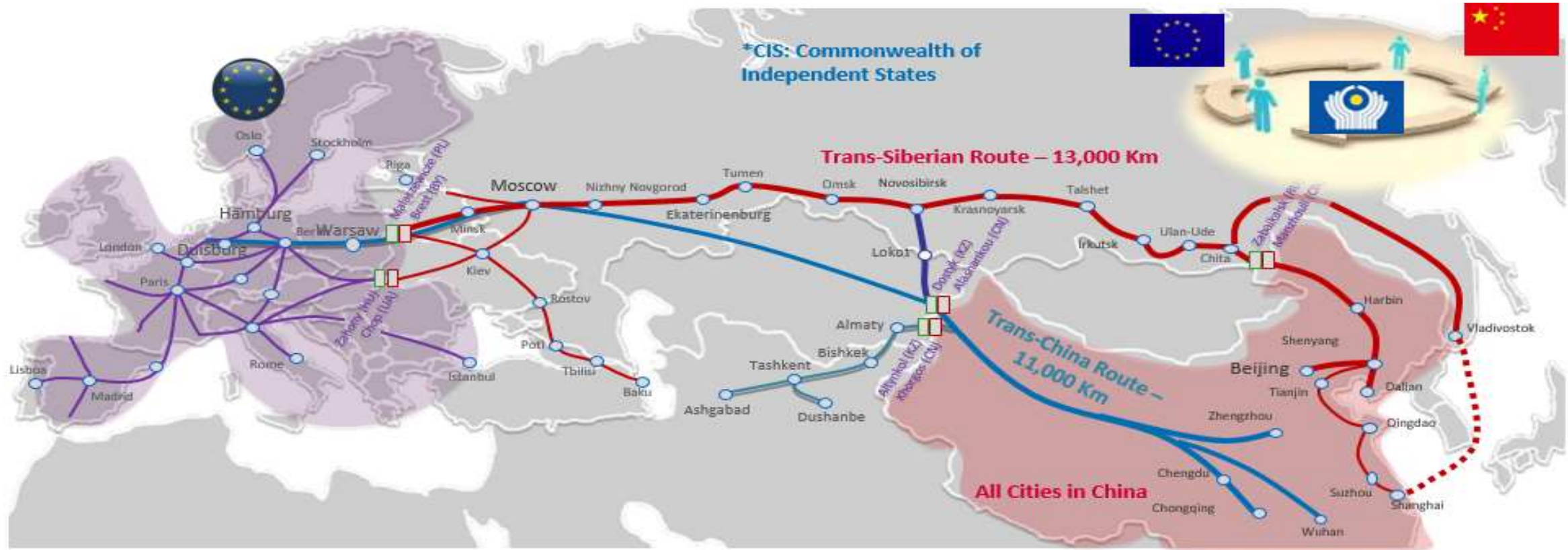


Products / Services

- Single container or more
- Outsized shipments
- LCL shipments
- Full Block Train



Railway routings



Trans-Siberian Route (TSR)	One of the major rail connections to CIS and Europe; most economic option and possible connection to Russian ports.
Trans-China Route (TCR)	Most effective connection to Central Asia and Europe; since 2013, rail crossing option in Khorgos released congestion due to high volume through Alashankou.



Liquid Tank Transport



River Transport

It is using the ship through the international inland arena rivers and other natural or artificial waterways;

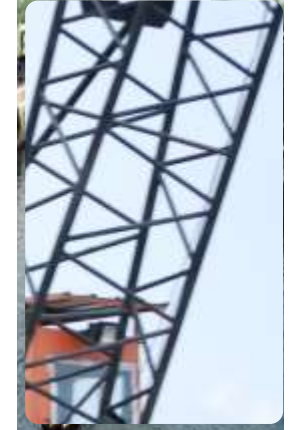
It is a way of transporting goods and passengers.

It is not only an integral part of the water transport and the hinterland and coastal connections, but also the connections of the neighboring border areas and Border Rivers, it plays an important supporting role in the modernization of transport. Started in southern China, it is mainly for salt, tea and silk transport.

Compared to the sea and ocean transport, inland transport's ship is smaller. It reduces calculate the computational cost of passenger and freight, and the cost of shipping is calculated according to the different types of transportation , however, compared to the railways, highways, the Yangtze River shipping is slow, timeliness weaknesses, but it have less investment capacity , low cost , low power consumption advantages.

The no delivery timeliness requirements like bulk goods and containerized goods, especially for requirements which need stable, continuous transmission will be able to meet their needs, and the price is cheap.

Transportation costs account for a large proportion of the entire price of bulk cargo, inland shipping has obvious advantages





ISO TANK oil Tank Container Transport

Canning is a stainless steel pressure vessel attached to the fastening of the outer frame.

For domestic and international road, rail, water transport and multimodal transport use.

In addition to having all the advantages of containerized transport, as compared to the "number of drums loaded with a standard dry container" means of transportation, it has an affordable, efficient, safe, conducive to the many advantages of environmental protection, aesthetics and so on.

The economic benefits

That is "the same shipping multiple shipments," thereby reducing the unit cost of land and sea cargo. In addition, the use of drums tank can save the cost of buying used discarded. It is savings two place during transport direct cost.

Quick

Tank use, there will be an expensive and time-consuming filling keg, keg loading and unloading process. In between highways, railways, waterways direct conversion mode of transport, simple and quick operation, in one step. Make "door to door" transport real.

The increased safety

Tank container transport is internationally recognized as the safest way to transport chemicals and food. In the process chemicals and food distribution to the various transport, compared with other methods, this is a unique non-run, run, drain and prevent their contamination of transport of goods.



More environmentally friendly; more beautiful, and give customers a good impression.

Liquid carrying ISO TANK, in addition there is a gas refrigerant shipping tank.

Shipment of products suitable for ISO TANK

Food

- Food, pharmaceutical-grade alcohol, fructose syrup, sorbitol, vitamin E oil, concentrated apple juice, grape juice, etc.

Product quality requirements for ordinary liquid chemicals

- Such as transformer oil, caprolactam, lubricants, etc.

Hazardous liquid chemicals

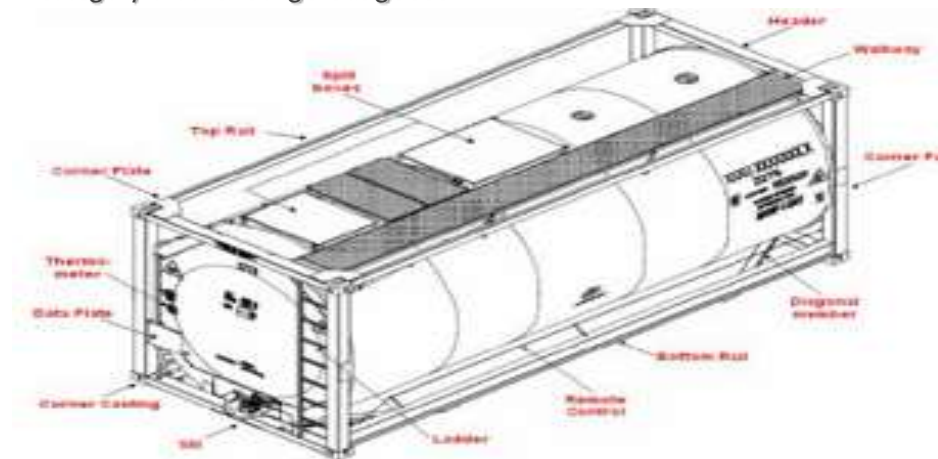
- Category 3 Flammable Liquids: dimethyl carbonate, acetonitrile, isopropanol and so on;

- Category 5 peroxide: hydrogen peroxide, etc.

- Category 6 toxic substances: acrylonitrile, toluene diisocyanate (TDI), etc.

- Category 8 corrosive products: phosphorus trioxide, phosphorus oxychloride, etc.

- Category 9 other dangerous goods





Bulk-Shipping / Ro-Ro

There are two types of bulk cargo and bulk cargo containers; bulk cargo is mentioned as bulk containers, including two dry matter (solid) bulk cargo and liquid bulk cargoes. Cargo needs LCL, so the manufacturers of the goods in a box process than the entire cabinet.

Bulk transport processes

1 received a customer inquiry; when a client consultation charter transportation, customers should understand the following questions.

- (1) Transportation: Panama and Capsize;
- (2) Shipping and port of discharge;
- (3) Name and number of the goods;
- (4) The rate of loading and unloading rates;
- (5) The loading port and the port of unloading waterline;
- (6) expected transport time;
- (7) Customer unit name, contact person, telephone, fax, e-mail, fax, etc.

2.To understand the time the user loading port and the port of unloading After the identification agreement of the user and the shipping company freight forwarders and customs, & provide users with a full set of advance notice required, according to the arriving time of the ship inform the customers proved all C/D paper.

3 limit import declaration: the declaration of entry from vehicles within 14 days from the date of declaration, the customs permit ultra-day delayed payment received, did not pay taxes in the tax bill within 14 days, the customs levy fines.

4, inspection procedures: Inspection - pay inspection fees - immigration, customs formalities - Draft Survey - sample tests - Quality Certificate

Customs procedures: declaration - inspection - tax - release – clearance





Large equipment transport

Through the actual operation experience in large equipment, there is a wealth of operating experience of Ro-ro ship and transportation of engineering project sand personalized service advantages;

A full range of modular services of large cargo shipping, transport, lifting, customs clearance, etc. Comprehensive analysis of customer demand, provide the perfect transportation scheme, careful contingency measures, supplemented by overall coordination, on-site supervision, ensure the safety of the goods and most economical way of transport to the destination.

Our company agent resources all over the world, established the powerful in the world's major port agent network which reliable guarantee to ensure that the arrival of the goods is safe, accurate and fast all over the world. At the same time, relying on the good relations of cooperation with the dock, with advantage of Shanghai port software and hardware, and the pursuit of the coordinated development between the common progress with customers.





Freezer Transport

The new conditions and adequate volume to meet the needs of the customers; One or two years of container shipping guarantee freezer service. Set up reasonable routes to ensure quick shipping time.



Set up reasonable routes to ensure quick shipping time; ensure all-day monitoring cooler in each link of transport; Precise control of computer unit, records of temperature; Experienced-professional staff and technicians specialized of freezer during the transit.



Dangerous cargo

- Dangerous goods transportation is a complicated process need to acquire complete knowledge and fully understand the relevant laws and regulations.
- We have has the qualification of dangerous goods operation team and strict operation procedure. Perfect and professional skills to ensure we are able to meet the needs of different customers.
- We have experience of operation of 2.1, 2.2, 2.3, 3, 4.1, 4.2, 4.3, 5.1, 5.2, 6.1, 8, and 9 hazardous level, thus for gas, flammable liquid, flammable solid, oxide, toxic and harmful substances, corrosive substances, and other dangerous and harmful material to provide professional services.
- As a traditional logistics providers, relying on in shipping LCL, FCL, the professional advantages of air transport, warehousing and storage yard, related to domestic and international including the dangerous goods by sea, air, inland waterway and road transport, packaging and storage of dangerous goods, documents processing, business consulting, and one-stop solution design, etc.





Why go via Nautilus Services?



- We can Offer better Price to customers (30%-70% lower than the standard tariff)



- Make traditional customs clearance available (duty refund for shipper)



- Make 3rd party duty settlement (convenient for 3rd party trading)



- Various and Flexible Solutions offered for air + courier combined services

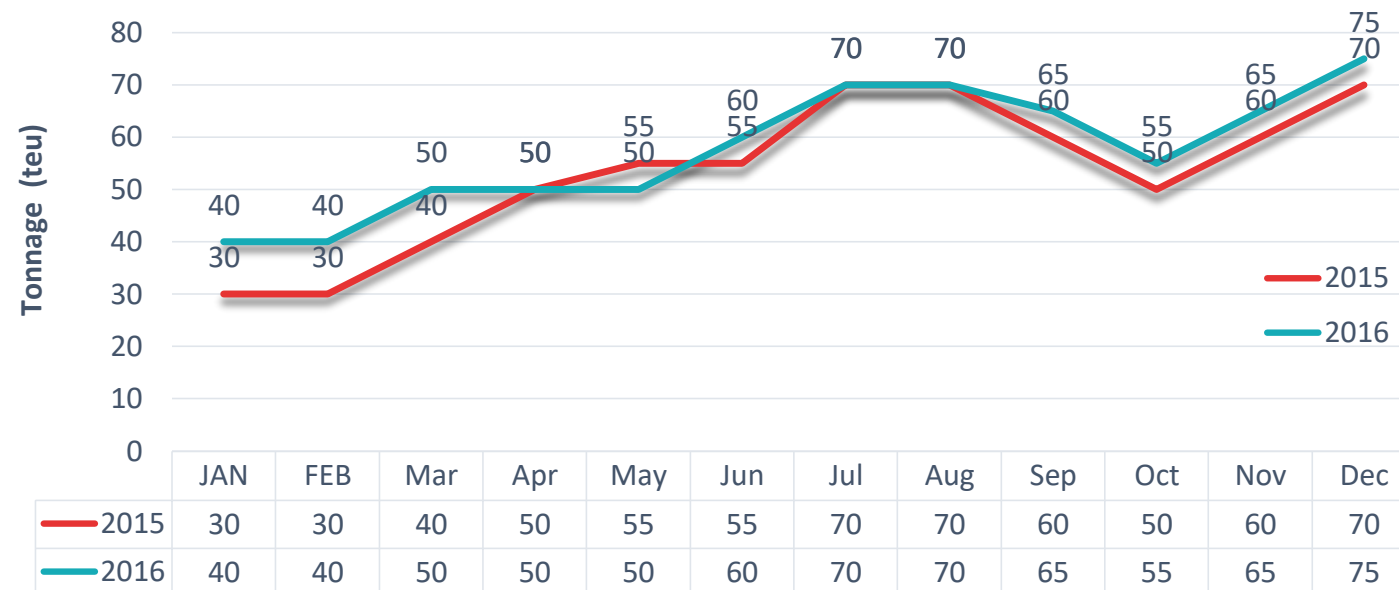


- Better services providing on various express brands, and more proactive tracking than express brands

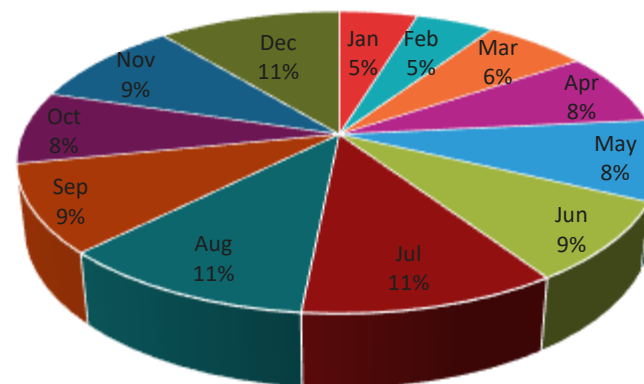


Yearly Tonnage

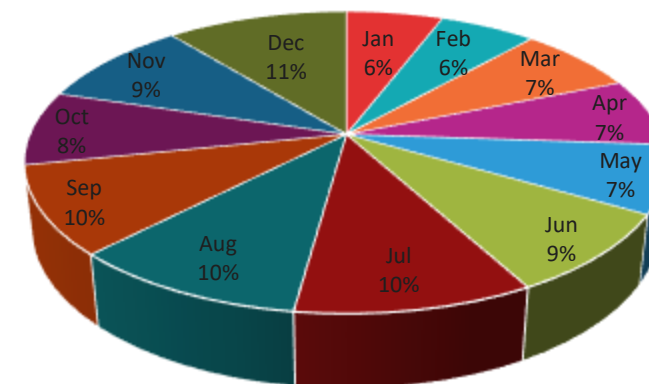
Tonnage in 2016 & 2017



2016



2017



Jan Feb Mar Apr May Jun Jul Aug Sep Oct Nov Dec

Jan Feb Mar Apr May Jun Jul Aug Sep Oct Nov Dec

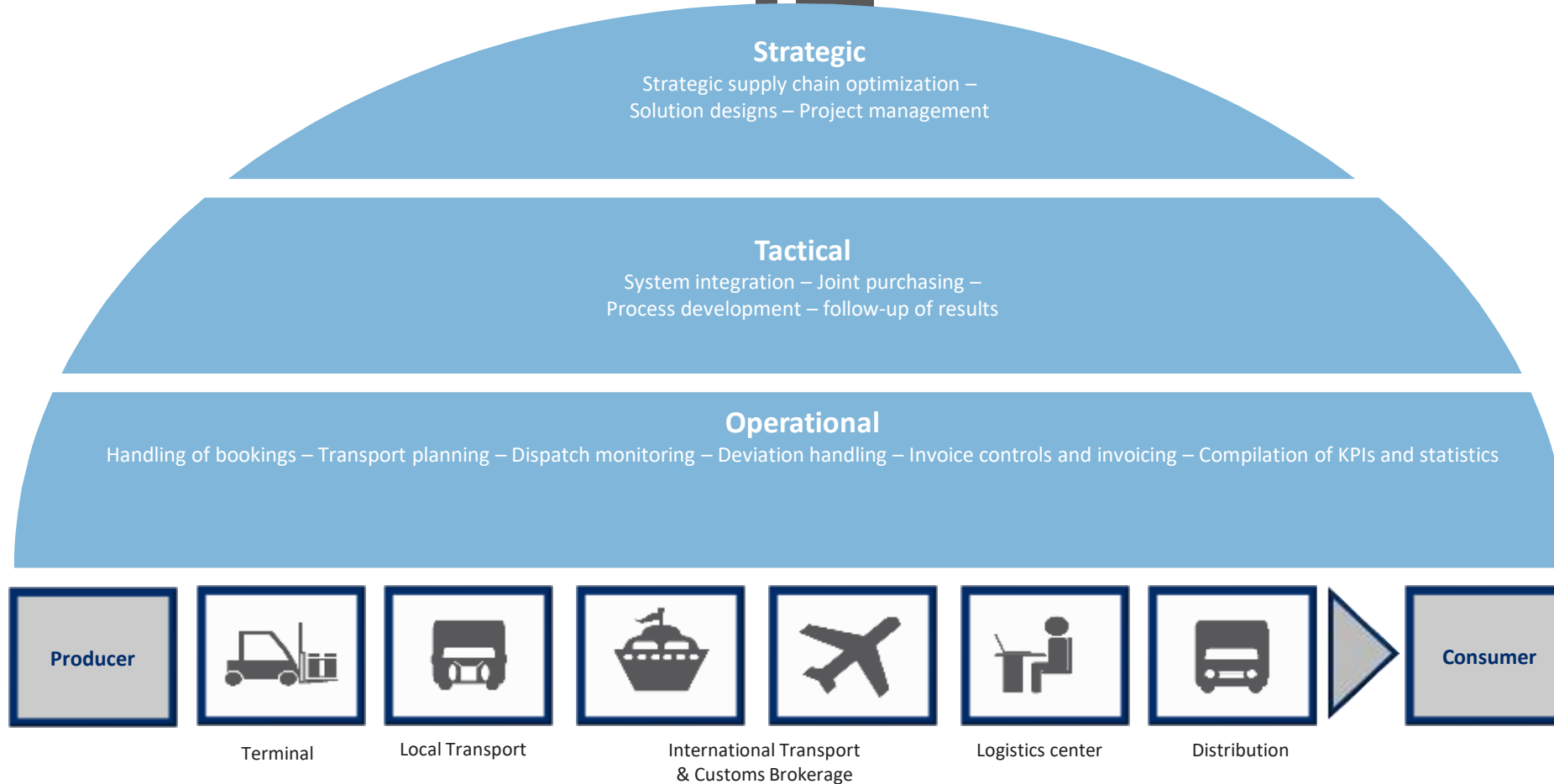


Control Tower

✓ Full control at all stages



Account Management





- ✓ 24 x 7 Web-based Tracking System
- ✓ Shipment / Booking / Order Tracking
- ✓ Full Shipment Details / Status Overview
- ✓ Customer Order Management System (Order/ Shipment Dashboard)
- ✓ Documentation available online
- ✓ Customized Report
- ✓ Real-time Shipment Status synchronized with S Group internal system





Advantage & Disadvantage

Strengths

Economic globalization
brings broad prospects

Threat

Consumers will constantly abandon
some of the old needs as a threat to biz



Weakness

Market and competition financial
barriers and distribution channel barriers

Opportunity

Consumers will constantly generate new
demands that may be chance for biz



Customers Reference



YOUNGOR
雅戈尔

SEPTWOLVES
七匹狼男装

Haier 海尔
KONKA

Hisense 海信

FLYCO 飞科

GREE 格力

fotile 方太

OPPLE
欧普照明

ANTA

娃哈哈
Wahaha



spg.
Starwood
Preferred
Guest

Le MERIDIEN

Sheraton
HOTELS & RESORTS

WESTIN
HOTELS & RESORTS

ST REGIS

THE LUXURY COLLECTION
Starwood Hotels & Resorts

FOUR POINTS
BY SHERATON

W
HOTELS

aloft
A VISION OF W HOTELS

aloft
A VISION OF W HOTELS

element
A VISION OF W HOTELS





We are the growth partner for our clients

Together, we design innovative solutions.
Together, we overcome constraints.
Together, we are highly effective.

Thank you



A low-angle, upward-looking shot of several tall, modern skyscrapers with glass facades, converging towards the top of the frame against a clear blue sky. The perspective creates a sense of height and scale. In the center, the words "THE END" are written in a bold, white, sans-serif font. A white, hollow diamond shape is superimposed over the text, with its point extending towards the right edge of the image.

THE END